

MONTHLY MEMBERSHIP PROGRESS REPORT

LOCATION NORTH CAROLINA

District 31 I

Results as of: 6/30/2023

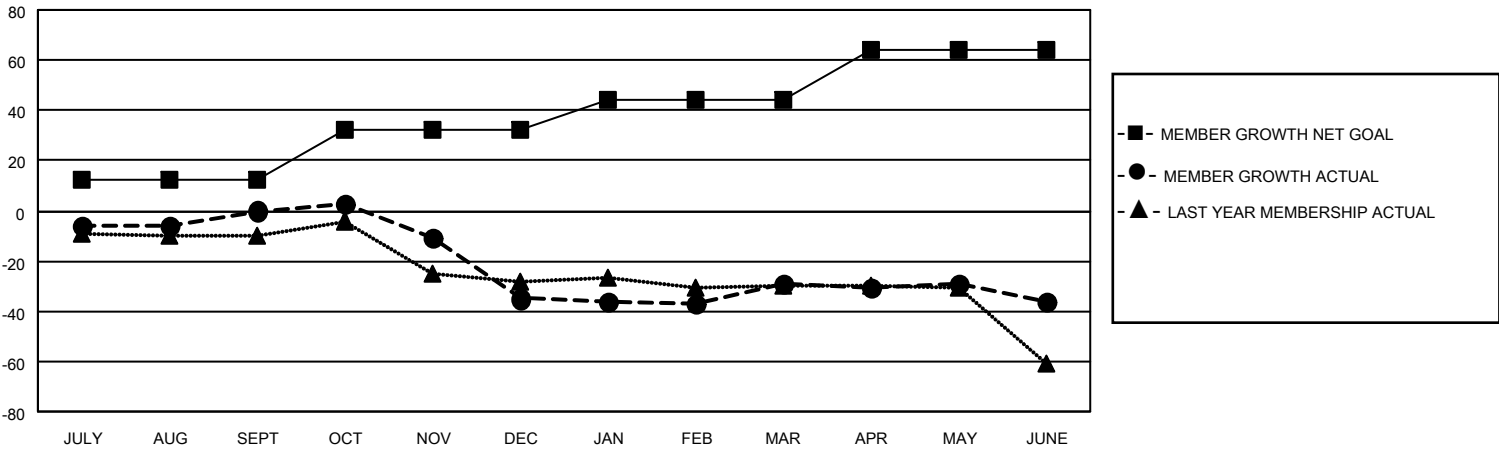
Clubs			
RESULTS FOR 2022-2023			
QUARTER	NEW CLUB GOAL	NEW CLUBS	DROPPED CLUBS
JULY/AUG/SEPT	0	0	2
OCT/NOV/DEC	1	0	2
JAN/FEB/MAR	0	0	0
APR/MAY/JUNE	1	0	0

Members			
RESULTS FOR 2022-2023			
QUARTER	MEMBER GROWTH NET GOAL	MEMBER GROWTH ACTUAL	DROPPED MEMBERS ACTUAL (including transfers)
JULY/AUG/SEPT	12	15	13
OCT/NOV/DEC	20	17	50
JAN/FEB/MAR	12	31	25
APR/MAY/JUNE	20	39	34

GOALS AND ACTUAL NEW CLUBS CUMULATIVE



GOALS AND ACTUAL MEMBERS CUMULATIVE



DROPPED CLUBS: 4

27 CLUBS OF 48 ADDED 1 OR MORE NEW MEMBERS

GENDER DISTRIBUTION

MALE	564 (63.51%)
FEMALE	324 (36.49%)
NON BINARY	0 (0.00%)
PREFER NOT TO ANSWER	0 (0.00%)

DROPPED MEMBERS

[CLICK HERE FOR CUMULATIVE MEMBERSHIP DATA](#)

DECEASED	22
CLUB CANCELLED	21
OTHER	79
TOTAL	122

TOTAL FAMILY UNIT MEMBERS	194
FAMILY MEMBERS PAYING HALF DUES	98